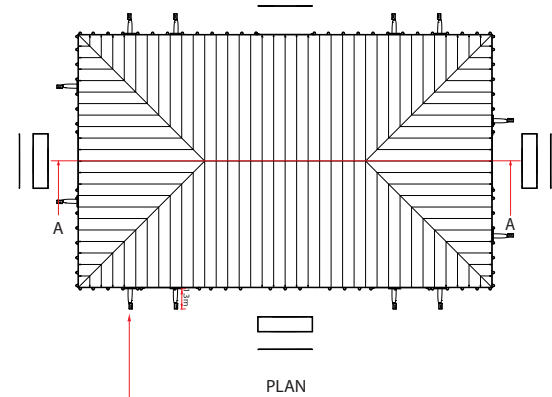
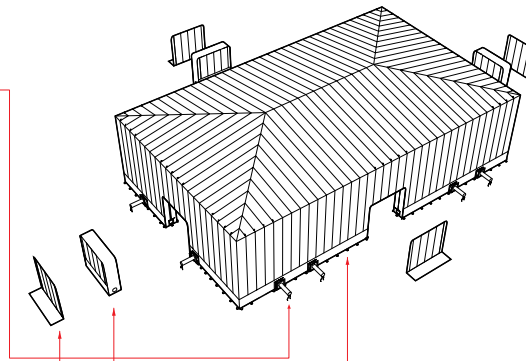


Objects with sharp corners/edges placed within the structure



- Zip in Inflatable Closer x3
- Zip in Night Sheet x4
- Ground Fixing Webbing loops

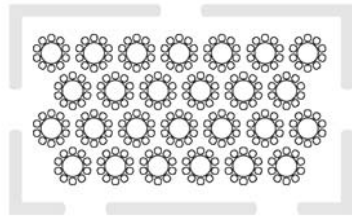
Fan positioning available at 12 separate points around structure edge. Cover redundant fan ports with supplied fanport cover panels. See Detail 2.

15m x 25m Cube

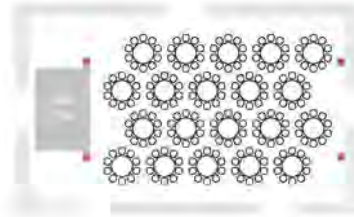
Dimensions & Arrangement

guidance for interior use

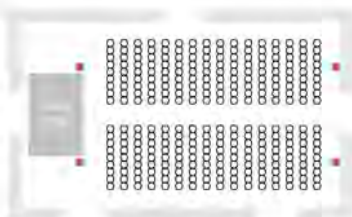
Due to the unique nature of the Inflate Structures the interiors are used for a vast range of functions with varying layouts. The layouts within this document demonstrate how to best optimize the space for dining, conference, presentation, and exhibition layouts..



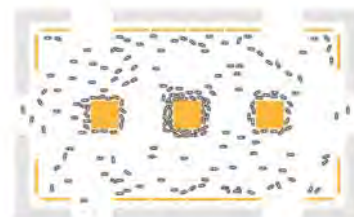
> 26 TABLES
260 SEATS







> 20 TABLES
200 SEATS
4x6m STAGE



> 288 SEATS
4x6m STAGE



> EXHIBITION
299 PEOPLE
(1 PERSON PER SQM)

-  TABLE + 10 SEATS
-  PEOPLE
-  STAGE
-  SPEAKERS

15m x 25m Cube
Dimensions & Arrangement

dryspace
.co.uk