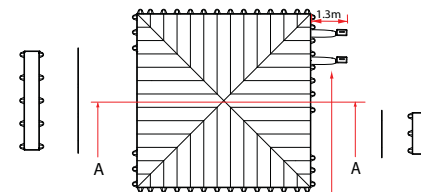
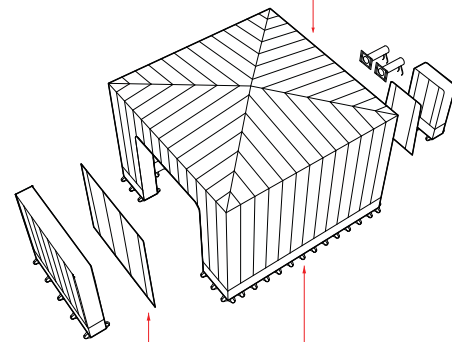
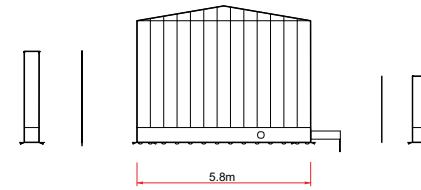
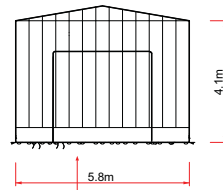


Objects with sharp corners/edges placed within the structure must not be placed within the exclusion zone shown in red.



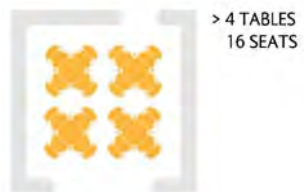
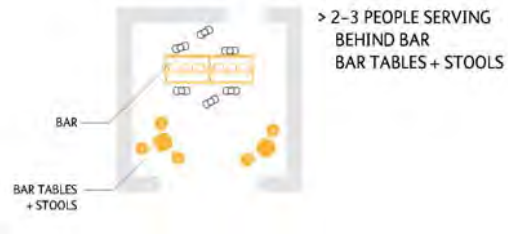
Fan positioning available at 2 separate points around structure edge. Cover redundant fan ports with supplied fanport cover panels. See Detail 2.

6m Cube

Dimensions & Arrangement

guidance for interior use

Due to the unique nature of the Inflate Structures the interiors are used for a vast range of functions with varying layouts. The layouts within this document demonstrate how to best optimize the space for dining, conference, presentation, and exhibition layouts.



6m Cube

Dimensions & Arrangement

dryspace
.co.uk